

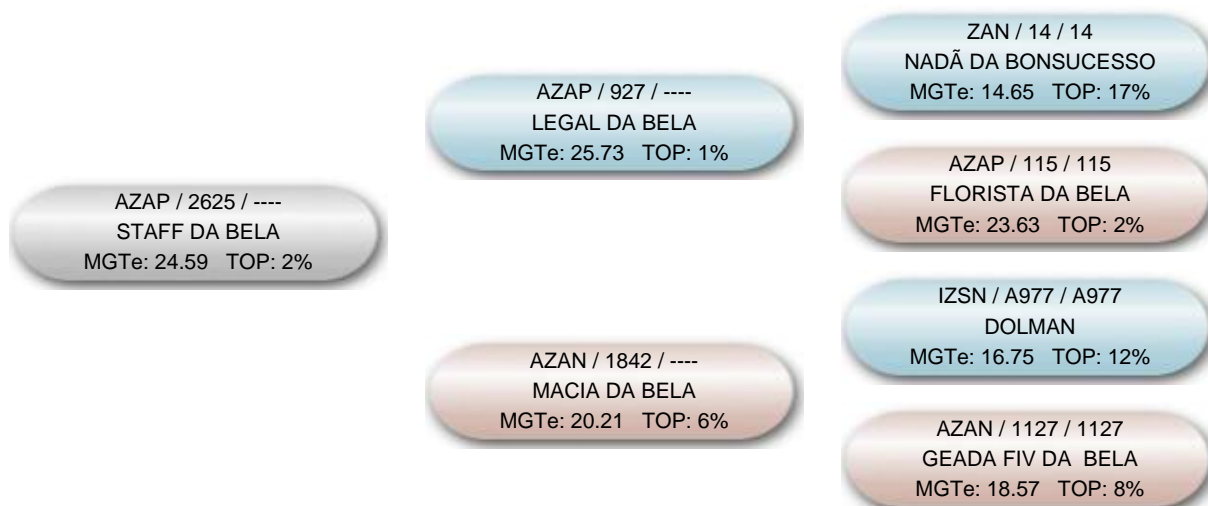
Nome do animal		Proprietário: 49 - Fazenda Da Bela Alvorada / Adriana S. Zancaner Aranha Pereira e Flávio J. Aranha Pereira			
STAFF DA BELA		Criador: 51 - Fazenda Nova Santo Angelo / Adriana S. Zancaner Aranha Pereira e Flávio J. Aranha Pereira			
Série	RGN	RGD	Raça	Categoria	Variedade
AZAP	2625		Nelore	PO	Padrão
Central			Reprodução Programada		
CRV Lagoa					
Sexo	Situação		Dt. Nasc.	MGTe	TOP
Macho	Ativo		20/09/2018	24.59 @70	@ 2%

DIPPG -0.80 @ 53 @ 14%	D3PG 72.43 @ 71 @ 15%	DIPMG 0.302 @ 71 @ 93%	MP120G 4.90 @ 56 @ 0.5%	MP210G 6.51 @ 55 @ 0.5%	MTP120G 8.19 @ 59 @ 0.5%	MTP210G 12.30 @ 59 @ 0.5%	DSTAYG 77.23 @ 66 @ 10%	DPACG 6.63 @ 58 @ 7%
DPGG 2.84 @ 84 @ 97%	DPNG 1.13 @ 80 @ 78%	DP120G 6.58 @ 66 @ 4%	DP210G 11.58 @ 68 @ 4%	DP365G 25.57 @ 75 @ 1%	DP450G 28.56 @ 77 @ 1%	DPAVG 31.73 @ 74 @ 89%	DCARG 0.119 @ 68 @ 98%	DIMSG 0.295 @ 73 @ 99%
DPE365G 0.36 @ 79 @ 25%	DPE450G 0.68 @ 82 @ 16%	DAOLG 2.69 @ 76 @ 2%	DACABG 0.64 @ 74 @ 1%	DMARG -0.24 @ 77 @ 100%	DMACG 0.042 @ 66 @ 89%	DPCQG 14.22 @ 81 @ 2%	DPPCG 4.62 @ 81 @ 2%	DEDG 70.32 @ 68 @ 11%
DPDG 74.95 @ 73 @ 1%	DMDG 74.62 @ 70 @ 3%	DESG 74.13 @ 78 @ 3%	DPSG 75.00 @ 81 @ 0.1%	DMSG 75.00 @ 80 @ 0.1%	DALTG -0.14 @ 77 @ 35%	DFRAMEG 0.000 @ 74 @ 34%		

@: Acurácia    @: TOP    DEP G: DEP Genômica    Em destaque DEPs que compõe o MGTe

NF3P	NN120	NRN120	NFSTAY	NF120	NR120	NF210	NR210	NF450	NR450	NFUS	NRUS	NFSAMS
0	0	0	0	0	0	0	0	0	0	0	0	0

Genealogia



DEPs Gráficas

